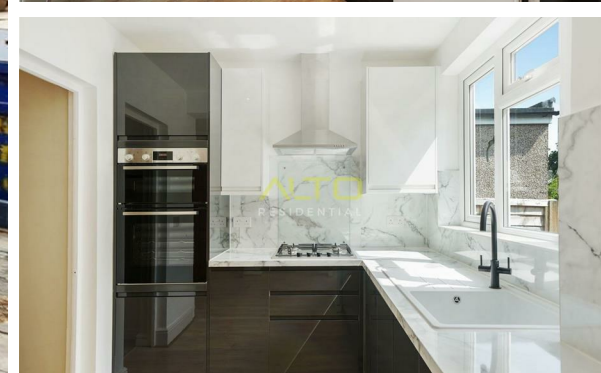
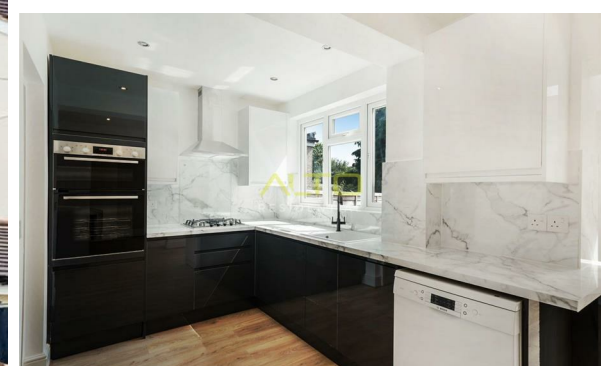


020 3965 7777

office@altoresidential.co.uk

altoresidential.co.uk

ALTO
RESIDENTIAL



Chestnut Drive, Pinner, Middlesex, HA5 1LY

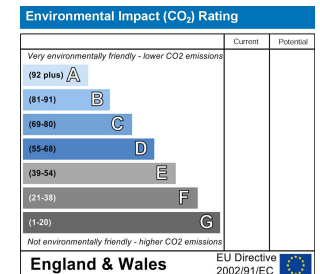
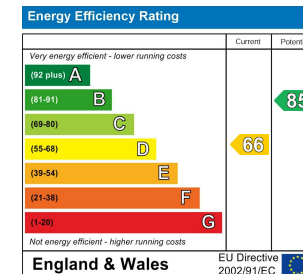
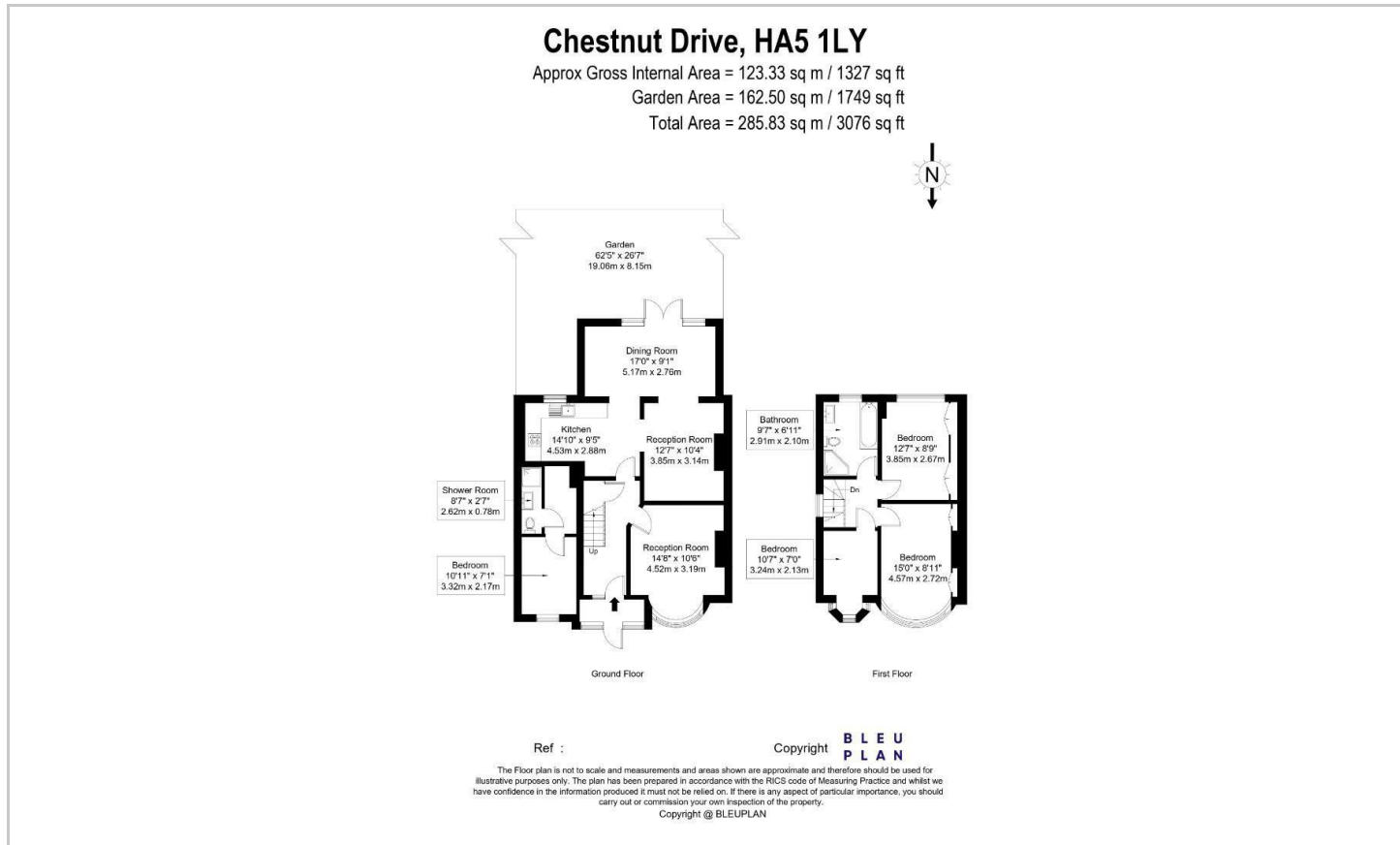
£2,950 PCM

- Entrance Porch & Hallway
- Separate Dining Room
- Ground Floor Shower Room
- Large Garden
- Reception Room
- Three/Four Bedrooms
- Off-Street Parking
- Available Now

A conveniently positioned family home with a number of highly regarded schools, local amenities, and excellent transport links is this generously proportioned, three/four-bedroom home.

This property offers an entrance porch and hallway with a useful storage cupboard, a front aspect reception room with a large bay window, a separate dining room, and a new kitchen/family area with direct access to the garden. Completing the ground floor is a fourth bedroom/study room and a modern shower room. To the first floor, there are three good-sized bedrooms with two benefiting from fitted wardrobes, and a family bathroom with a walk-in shower.

Chestnut Drive is a popular, family-friendly road located just moments from the highly regarded Cannon Lane Primary School. Pinner and Eastcote's amenities can also be found close by offering a variety of shops, restaurants, coffee houses, and popular supermarkets.



These particulars, whilst believed to be accurate are set out as a general outline only for guidance and do not constitute any part of an offer or contract. Intending purchasers should not rely on them as statements of representation of fact, but must satisfy themselves by inspection or otherwise as to their accuracy. No person in this firm's employment has the authority to make or give any representation or warranty in respect of the property.