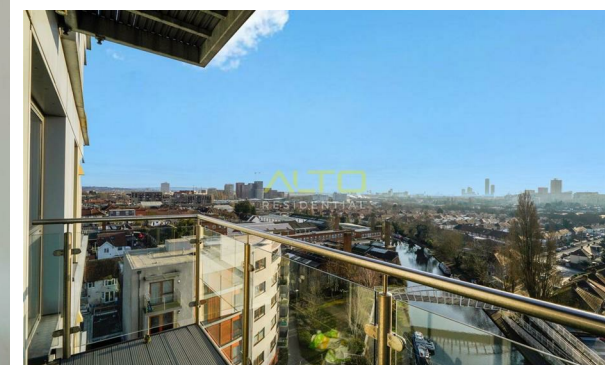
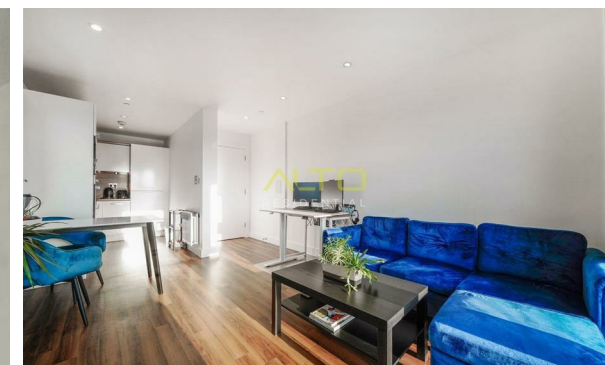


020 3965 7777

office@altoresidential.co.uk

altoresidential.co.uk

**ALTO**  
RESIDENTIAL



Atlip Road, Alperton, Middlesex, HA0

£1,995 PCM

- Two Bedrooms
- Stunning London Views
- Newly Carpeted
- Eighth Floor
- Repainted Throughout
- Available Now



An immaculate eighth-floor apartment offering 759 sq ft (70 sq m) of well-designed living space. The property enjoys abundant natural light through large windows and features stunning views from its private balcony.

The apartment includes two double bedrooms, two bathrooms (one en-suite), ample storage and an L-shaped balcony overlooking London. It has been freshly repainted and fitted with new carpets.

Conveniently located just a short walk from Alpertown and Hanger Lane stations (Piccadilly and Central lines) and within easy reach of the A406 and A40.

Energy Efficiency Rating		Current	Potential
Very energy efficient - lower running costs			
(92 plus) A			
(81-91) B			
(69-80) C			
(55-68) D			
(39-54) E			
(21-38) F			
(1-20) G			
Not energy efficient - higher running costs			
		81	83
EU Directive 2002/91/EC			
England & Wales			

Environmental Impact (CO <sub>2</sub> ) Rating		Current	Potential
Very environmentally friendly - lower CO <sub>2</sub> emissions			
(92 plus) A			
(81-91) B			
(69-80) C			
(55-68) D			
(39-54) E			
(21-38) F			
(1-20) G			
Not environmentally friendly - higher CO <sub>2</sub> emissions			
		92	93
EU Directive 2002/91/EC			
England & Wales			

These particulars, whilst believed to be accurate are set out as a general outline only for guidance and do not constitute any part of an offer or contract. Intending purchasers should not rely on them as statements of representation of fact, but must satisfy themselves by inspection or otherwise as to their accuracy. No person in this firm's employment has the authority to make or give any representation or warranty in respect of the property.